

# PLACER MOSQUITO & VECTOR CONTROL DISTRICT

150 WAVERLY DRIVE LINCOLN, CA 95648  
Phone: (916) 435-2140 Fax: 916-435-8171



• HOME • CONTACT US • REQUEST INSPECTION • LINKS •

March 5 2009

**[-NAVIGATION-]**

- [What We Do](#)
- [Service Requests](#)
- [Mosquitofish](#)
- [Mosquito Facts](#)
- [Local Mosquitoes](#)
- [West Nile Virus](#)
- [California WNV](#)
- [CDC W.N.V. FAQ](#)
- [USGS WNV Maps](#)
- [Job Opportunities](#)
- [Minutes & Agendas](#)
- [Trustees](#)

**[-SEARCH-]**

**[-PLACER MVCD-]**



Placer MVCD uses airplanes such as these to treat mosquito populations!

## Who We Are and What We Do

The Placer Mosquito and Vector Control District is a special district that serves all of Placer County.



Families attending a public education meeting put on by the district.

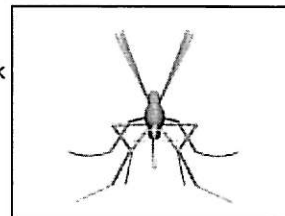
Our mosquito technicians are certified by the State of California Health Services in pesticide usage, mosquito and vector identification. We conduct constant surveillance to locate mosquito breeding sources and to solve mosquito problems using physical, biological and chemical means along with public education.

Sources such as creeks, wetlands, vernal pools and other naturally-occurring habitats, along with man-made sources are inspected the District for mosquito production. Agricultural, industrial, and residential sources are also routinely inspected and treated as needed.

Carbon dioxide (CO<sub>2</sub>) baited traps, gravid traps, and New Jersey light traps, and resting boxes are used to collect adult mosquitoes. Sentinel chicken flocks are placed throughout the District and tested every other week from April thru October to detect the local transmission of mosquito-borne diseases such as Western equine encephalitis (WEE), West Nile (WN), and St. Louis encephalitis (SLE) viruses.

The objectives of our program are to control or eliminate existing mosquito breeding sources and to prevent new ones to protect public health and comfort. This is not going to be a quick or easy process, it will take several years of hard work before residents will notice any consistent significant reduction of the mosquito problems in the area, due mainly to the magnitude of the breeding sources in the agricultural areas of the District, along with problem areas that impact us but are out of our jurisdiction, and have little or no mosquito control at this time.

We are also working closely with the pesticide manufacturers to help us with developing material formulations that will improve mosquito control in the problem areas.



The materials we use to control the mosquito larvae and adults are the safest and least toxic materials available for public health mosquito control. Larvicides are used to kill mosquito larvae. Larvicides include biological insecticides, such as *Bacillus thuringiensis israelensis* (B.t.i.) and *Bacillus sphaericus* which are naturally-occurring bacteria. Only mosquitoes, black flies and some midges are susceptible. Other aquatic invertebrates and non-target insects are unaffected by these products. Larviciding oils and monomolecular films (MMFs) are used to drown mosquito larvae and pupae in their later aquatic stages when they do not feed by forming a thin coating on the surface of the water. Methoprene is an insect growth regulator which is a target specific material that does not harm mammals, waterfowl, or beneficial predatory insects. The District uses pyrethrins and pyrethroids for our adult mosquito control program. Pyrethrins are insecticides that are derived from the extract of chrysanthemum flowers and pyrethroids are synthetic forms of pyrethrins. These are generally applied as an ultra-low volume (ULV) mist by truck mounted or hand-held foggers in populated areas and by aircraft over the agricultural areas of the District.

• HOME • CONTACT US • REQUEST INSPECTION • LINKS •



PLACER MOSQUITO & VECTOR CONTROL DISTRICT



Placer Mosquito and Vector Control District • PO Box 216 Lincoln, CA 95648 • Tel: (916)435-2140